



Dominion Beach Nourishment Pilot

Environmental Protection Plan

Dominion, Nova Scotia

NCL - Northern Contracting Limited



Sydney Mines, NS

B1V 2L9

Phone 902-736-8908

Fax 902-736-2799



Table of Contents

- **1.0 Introduction**
- **2.0 Goals and Objectives**
- **3.0 Roles and Responsibilities**
 - o **3.1 NCL Personnel Qualifications**
- **4.0 Description of Work**
- **5.0 Mitigation Procedures**
 - o 5.1 Petroleum, Oils and Lubrication Materials
 - o 5.2 Waste Management
 - o 5.3 Dust Control
 - o 5.4 Erosion Control
 - o 5.5 Noise Control
 - o 5.6 Solid Waste Disposal
 - o 5.7 Sewage Disposal
 - o 5.8 Contaminant Prevention
- **6.0 Emergency and Contingency Plans**
 - o 6.1 Fuel and Hazardous Material Spills
 - o 6.1.1 Principle Environmental Concerns
 - o 6.1.2 Environmental Protection Procedures
- **7.0 Incident Reporting**
- **8.0 Construction Methodology**
 - o **8.1 – Invasive Species**
- **9.0 Erosion & Sediment Control Plan**
- **10.0 Key Contact List**

1.0 Introduction

The Environmental Protection Plan (EPP) outlines the general mitigative measures which could be deployed for protection of the environment during construction activities. The purpose of this EPP is to provide a detailed strategy to be implemented for the tasks associated with the Dominion Beach Nourishment Pilot Project.

This EPP does not replace or take any precedent over any site-specific environmental requirements or measures that have been developed for individual tasks. This EPP is intended to be a practical document which clearly outlines the mitigative measures to be implemented by NCL's employees and should be read in conjunction with all applicable provincial and federal acts and regulations.

A site visit along with a review of the contract requirements was performed to determine the locations/areas of potential environmental risk along with erosion and sediment release sources in relation to any sensitive receptors.

Although the purpose of this document is to provide a detailed strategy for minimizing adverse environmental effects, the mitigative measures outlined for specific tasks may vary due to changes in site conditions, weather, etc.

2.0 Goals and Objectives

The goal is to produce a practical plan for environmental protection which clearly outlines the mitigative measures to be implemented by NCL's employees. The EPP is a living document with changes to be made as the project evolves.

The objectives of the EPP are as follows:

- Support NCL's commitments to protecting the environment;
- Identify potential concerns and appropriate measures; and
- Provide instructions to relevant project personnel regarding procedures for protecting the environment and minimizing potentially adverse environmental effects.

3.0 Roles and Responsibilities

This section includes guidance on the roles and responsibilities along with the documentation obligations of all on-site NCL personnel as well as any subcontractors.

NCL's staff will endeavour to ensure that the environmental commitments of the EPP will be met and that work proceeds in compliance with environmental regulations and contract specifications.

The following outlines the roles and responsibilities of construction staff with respect to environmental management:

- a) NCL, as the general contractor, is responsible for the implementation of the measures outlined in this EPP.
- b) A representative designated by NCL will act as site foreman for the duration of the project and ensure that all site employees follow the measures outlined in the EPP.
- c) NCL will ensure that a copy of the current EPP is available on-site at all times and that all site employees will be made aware of its location as well as who to contact regarding any environmental issues or concerns.
- d) NCL will notify the Consultant/Owner of any potential concerns regarding the safe keeping of the environment.

An integral part in implementing best environmental practices during construction is ensuring that all relevant and pertinent documents are available to construction staff as well as regulatory agencies. The following measures will be put into action to ensure that all information is properly distributed:

- a) All relevant project documentation shall be present on site at all times including specifications, construction drawings, EPP, H&S Plan and any relevant permits and approvals;
- b) All practices and procedures outlined in these documents shall be implemented when necessary and adhered to;
- c) NCL will ensure that any reporting required by regulations or this EPP is conducted in a timely manner.

3.1 NCL Personnel Qualifications

NCL Health Safety Coordinator – Josh Swain who has been in his role with NCL since 2015. Josh graduated in 2015 - Diploma in Environmental Health and Safety & currently holds all relevant safety certifications necessary to perform all duties and responsibilities required. Responsibilities include: providing direction to all levels of supervision/management, to remain compliant to Occupational Health and Safety Legislation, develop health and safety procedures/practices in compliance with current OHS Act, Regulation and Code, inspect departments, sites to ensure compliance with internal NCL H&S Plan and applicable Acts and Regulations, perform all new hire and sub-contractor orientations reviewing company policies, procedures and applicable legislation, manage all safety records for company and conduct annual internal audits.

Josh is responsible for our training program, ensuring all staff members are up to date with all of the necessary training certificates.

Site Foreman – Ethan Campbell who has been with NCL since 2018. Ethan's responsibilities will include implementing and maintaining the erosion & sediment controls, and adhering to all measures put forth

in the environmental protection plan. NCL site supervision personnel are equipped with Nova Scotia Public Works Erosion & Sediment Control Training Certificates.

4.0 Description of Work

The scope of work involved with this project is broken down into the following main tasks:

- Installation of Site Signage
- Installation of Silt Fencing
- Installation of Cobble / Clear Stone Revetment

5.0 Mitigation Procedures

Mitigation procedures are presented for the following potential environmental hazards.

5.1 Petroleum, Oils and Lubrication Materials

By implementing proper handling, storage and disposal of petroleum, oils, and lubricants (POLs) on-site(s), the likelihood of incidents that result in negative impacts to the environment is greatly reduced. The following procedures will be implemented by NCL for proper handling, storage and disposal of POLs:

- a) Fueling and lubrication of equipment shall occur only in approved locations. Construction equipment will be travelled to nearest approved location, where the fuel truck will have ease of access to fuel equipment. Fuel will be delivered by Bluewave Energy. All vehicles capable of travelling to the fuelling area shall do so.
- b) Vehicle and equipment checklists will be performed daily to ensure they are in proper working condition. Checklists will be submitted to the site foreman to be filed. Any deficiencies will be repaired in a timely manner.
- c) Regular inspections of machine hydraulic systems shall be performed, and leaks shall be repaired immediately upon detection. Only equipment deemed clean and in good working order by a mechanic will operate on this project.
- d) Waste oils and lubricants shall be retained in a tank or closed container in a designated storage location on site and disposed of in an approved manner as per owner and all regulatory authorities.
- e) Greasy or oily rags, or materials subject to spontaneous combustion shall be deposited and stored in an appropriate receptacle. The project foreman will also carry garbage bags in their vehicle for disposal of materials. This material shall be removed from the work site on a regular basis and shall be disposed of at an approved waste disposal facility.
- f) All hazardous materials shall be stored with secondary containment and properly labelled.
- g) All vehicles and equipment shall have an emergency spill kit on board, or a spill kit drum shall be placed adjacent to the work area for clean up of any spills.

5.2 Waste Management

Solid waste, either generated from construction materials or uncovered during construction operations, will be managed by NCL in the following ways:

- a) All site employees will be briefed on NCL's commitment to proper waste management.
- b) Minor solid wastes that are small enough to be disposed of in litter receptacles will be done so immediately. These receptacles will be emptied, and waste removed from site as often as required to maintain site tidiness. The site foreman will also carry garbage bags in his site vehicle for disposal of waste.
- c) Prior to project completion, NCL will ensure that all solid waste is removed from site to the satisfaction of Build NS.

5.3 Dust Control / Air Pollution Control

During dry conditions, excessive dust may be generated from construction activities. This may have a detrimental impact on the local environment and may also disrupt normal activities of the nearby public.

NCL will implement the following procedures to ensure potential impacts from construction are minimized:

- a) If required, NCL will apply dust suppressants in the form of water only.
- b) NCL will ensure that in areas of sensitive land use dust generation is monitored and controlled;
- c) Ensure all equipment have sufficient DEF (diesel exhaust fluid)

5.4 Erosion Control

Erosion and sediment concerns can arise at any time during the life of a construction project. Suitable mitigative measures are therefore required for temporary site conditions which occur for a relatively short period during the construction phase as well as for the permanent conditions following the completion of the project.

Factors which can influence the severity of erosion and sedimentation include soil type, vegetation, topography, weather, and climate. These factors will determine the amount and complexity of the

mitigative measures that will be required to ensure adequate erosion and sediment control. Generally, erosion and sediment control measures will include the application of controls such as:

- Runoff controls - diversion berms, cross trenches, check dams, interceptor swales
- Erosion control - diversion ditch and dispersion aprons, gravel sheeting, hay mulch
- Sediment control - silt fence, straw bale barriers, filter berms, sediment traps

The following points and definitions comprise the basic principles of erosion and sediment control. NCL shall implement these measures where there is a risk of erosion and loss of soil:

- a) Areas where soil or subsoil has been exposed shall be stabilized by:
 - grading exposed areas to a slope which minimizes the potential for erosion;
 - applying appropriate erosion and sediment control measures; and
 - seeding, mulching, or covering with erosion control matting were deemed appropriate.
- b) Sediment and erosion control measure shall be installed prior to site disturbance and meet the quality as outlined in the project or manufacturers specifications. These measures shall only be removed when the disturbed areas are stabilized.
- c) Buffer areas of undisturbed vegetation shall be maintained adjacent to watercourses, to the extent practical.
- d) Sediment and erosion protection measures shall be inspected daily and during or immediately following heavy rain events. Sediment fences and buffer zones shall be maintained in an effective working condition.
- e) Measures shall be taken to protect the stability of stockpiled material, which could include covering the material, placing silt fence around the perimeter, or creating a dyke to prevent erosion and silt-laden runoff.

5.5 Noise Control

During construction, excessive noise from equipment may become a nuisance to nearby buildings and residents. The following procedures will be implemented to ensure potential impacts are minimized:

- a) NCL will ensure construction activities are carried out within times acceptable to local authorities, proposed times of 7 am to 5:30pm.
- b) NCL shall minimize noise levels during construction, wherever possible.

5.6 Solid Waste Disposal

Solid waste, either generated from construction materials or uncovered during construction operations, will be disposed of by NCL in the following ways:

- a) Minor solid wastes that are small enough to be disposed of in litter receptacles will be done so immediately. These receptacles will be empties and waste removed from site as required to keep the work site tidy. Employees shall not discard of personal waste on the site. A portable toilet will be placed on site.
- b) Large construction waste will be separated and stored in a secure, designated area of the site until enough has accumulated to warrant disposal at an approved waste disposal facility.
- c) Burning or burying of rubbish or waste material will not be permitted on site.
- d) Suspected contaminated waste or volatile materials of any kind will not be permitted to be disposed of into waterways, storm, or sanitary sewers.
- e) Prior to project completion NCL will ensure that all solid waste is removed from the site to the satisfaction of the Consultant.

5.7 Sewage Disposal

NCL will have portable toilets available on site and ensure that they are cleaned as required on a regular basis.

5.8 Contaminant Prevention

NCL will utilize various measures to ensure a safe, clean site. NCL will utilize silt fencing to protect adjacent ponds/ocean from silt. NCL equipment / supervision will have vehicles equipped with fuel/lubricant spill kits. NCL will also advise that all machine greasing & refuelling take place off of the beach and in the parking lot to avoid any potential spills.

5.9 EPP Training

NCL will ensure that all site supervision, labourers, operators, truckers & site visitors have been informed and sign a site copy of the approved environmental protection plan. All NCL site employees will have completed this before commencing work.

6.0 Emergency and Contingency Plans

6.1 Fuel and Hazardous Material Spills

This contingency plan presents a detailed response system to deal with incidents such as the release of petroleum, oils, or lubricants (POLs) or other hazardous liquids.

6.1.1 Principle Environmental Concerns

The objectives of the plan are to minimize the following principal environmental concerns:

- danger to persons;
- short- and long-term pollution of land, water and air;
- minimization of the extent of affected area;
- reduction of hazardous conditions to facilitate cleanup; and
- disturbance to wildlife.

6.1.2 Environmental Protection Procedures

In the event the fuel or other hazardous material is spilled or discovered the following procedures shall be followed:

- a) Training of construction personnel is the responsibility of NCL and will be made a requirement that all appropriate personnel will be trained before commencement of work on the project.
- b) The individual who discovers a leak or spill shall immediately attempt to stop and contain the leak or spill as per instructions received during orientation.
- c) Work in the immediate area of a spill or leak shall be halted and the spill shall be reported to the foreman or site supervisor.
- d) Any spill or leak shall be reported immediately to Build Nova Scotia's on-site contact.
- e) The on-site inspector or engineer will have full authority to make recommendations for consideration for NCL to implement.
- f) The foreman or site supervisor shall assume the overall responsibility of coordinating a cleanup which will include the following actions:
 - deploy on-site personnel to contain the spilled material using a dyke, pit, absorbent material or booms as appropriate.
 - assess site conditions and environmental impact of various clean up procedures.
 - choose and implement an appropriate clean-up procedure.
 - deploy on-site personnel to mobilize pumps and empty drums (or other appropriate storage) to the spill site.
 - apply absorbents as necessary.
 - remove any contaminated soil as directed by the on-site owner's representative or consultant.
 - dispose of all contaminated debris, water, soil, cleaning materials, and absorbents by placing in an approved disposal site; and
 - take all necessary precautions to ensure that the incident does not reoccur.

- h) During on-site activities, the following spill response resources shall be available at an appropriate location in readiness to respond to accidental releases of fuels and/or hazardous materials:
- Spill kit(s) including spill absorbent materials (e.g., sorbent pads, Sorb-All, vermiculite).
 - Small hand tools such as shovels, rakes, tool kit, buckets, stakes, tarpaulins, empty drum, protective equipment.
 - Fire extinguisher.

7.0 Incident Reporting

During the length of the project, incidents may occur which will result in the immediate need to notify Build Nova Scotia. Some of these instances include:

- Fuel spills;
- Sedimentation releases;
- Bird nesting discoveries or additional wildlife habitat disturbances;
- Employee injury.

Should any of the above incidents occur, Build Nova Scotia. shall be notified immediately of the situation. All work in the area will be halted immediately until the situation is resolved. NCL would then complete an incident report for submission to Build Nova Scotia outlining the details of the occurrence. We would also cooperate fully with Build Nova Scotia should any further investigation into the incident be warranted.

8.0 Construction Methodology

Revetment material will be trucked in using tractor trailers using the Lower Mitchell Avenue beach entrance. Material will be dumped and stockpiled in an area agreed upon with Build Nova Scotia. Material will be re-handled by a wheel loader, loaded on NCL's JCB 714 Off Highway Truck and delivered to a 20-tonne excavator awaiting the material in the new revetment area. NCL will employ construction labourers to act as truck spotters for dumping and pedestrian management. Construction signage will also be in place to ensure the public is aware of construction activity.

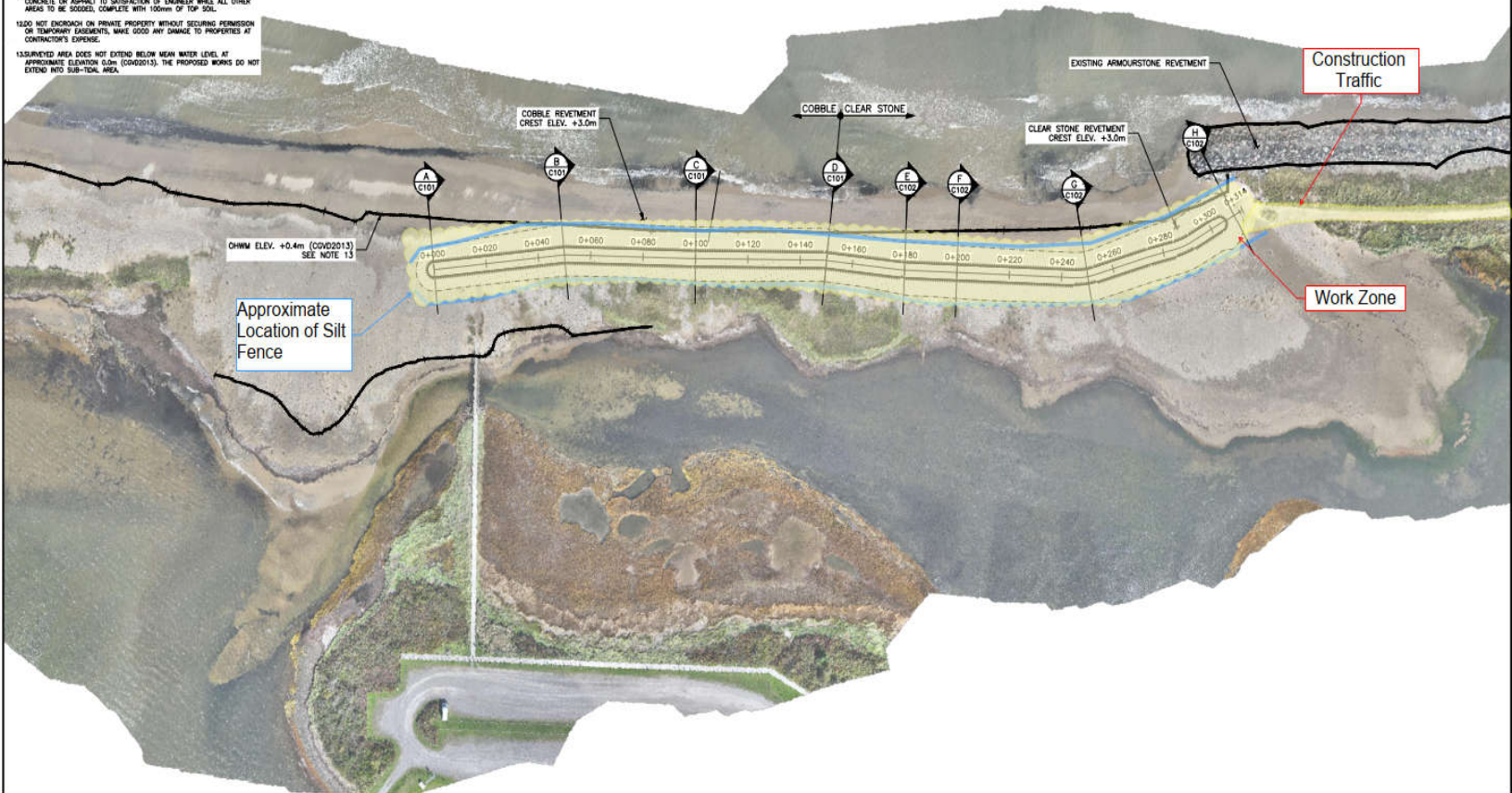


8.1 Invasive Species

NCL has reviewed and acknowledges the DFO Letter included in the Dominion Beach Nourishment Pilot tender package. Attached is a copy for reference.

9.0 Erosion & Sediment Control Plan

1. ALL UNITS ARE METRIC AND IN METRES/MILLIMETRES AS APPLICABLE. THE TOPOGRAPHIC INFO IS REFERENCED TO NAADICTORS WITH 'A' ELEVATIONS ARE REFERENCED TO THE CGVD2013 VERTICAL REFERENCE. TOPOGRAPHIC SURVEY COMPLETED BY KIMON ON APRIL 2023.
2. THE CONTRACTOR SHALL ADHERE TO ALL OCCUPATIONAL HEALTH AND SAFETY REGULATIONS.
3. ALL WORK SHALL BE IN ACCORDANCE WITH NOVA SCOTIA ENVIRONMENT'S REQUIREMENTS FOR HANDLING AND DISPOSAL OF CONTAMINATED MATERIALS AND PESTICIDES, SLATES, AND WATERCOURSE ALTERATIONS.
4. ALL WORK SHALL BE IN ACCORDANCE WITH THE LATEST REVISION OF NOVA SCOTIA ENVIRONMENT'S EROSION AND SEDIMENT CONTROL HANDBOOK FOR CONSTRUCTION SITES.
5. THE CONTRACTOR TO OBTAIN ALL NECESSARY PERMITS REQUIRED TO PERFORM WORK AND TO COMPLY WITH ALL PERMIT REQUIREMENTS AND CONDITIONS.
6. THE CONTRACTOR IS RESPONSIBLE TO ARRANGE FOR ON SITE LOCATES WITH ALL UTILITIES PRIOR TO START OF WORK. CONTRACTOR SHALL CONFIRM ALL EXISTING DIMENSIONS, ELEVATIONS AND LOCATIONS AND REPORT ANY DISCREPANCIES TO THE ENGINEER.
7. THE CONTRACTOR IS TO NOTIFY DNR AND NOVA SCOTIA ENVIRONMENT REGARDING CONSTRUCTION SCHEDULE PRIOR TO COMMENCING CONSTRUCTION.
8. IF THE CONTRACTOR IS TO REPLACE ANY DAMAGED OR DISTURBED SURVEY PINS USING A NOVA SCOTIA LAND SURVEYOR, PROVIDE SUPPORTING DOCUMENTATION.
9. THE CONTRACTOR IS RESPONSIBLE TO VISIT THE SITE AND TO BE FAMILIAR WITH THE EXISTING CONDITIONS PRIOR TO COMMENCING WORK. THE SITE IS LOCATED IN A DRIVING AREA SUBJECT TO EROSION AND SEDIMENT MOVEMENT. THE CONTRACTOR IS REQUIRED TO INFORM THE DEPARTMENTAL REPRESENTATIVE IN WRITING OF ANY DISCREPANCIES BETWEEN THE EXISTING CONDITIONS AND THE DRAWINGS PRIOR TO COMMENCING WORK.
10. THE CONTRACTOR IS RESPONSIBLE FOR THE PROTECTION OF TREES, WITHIN THE CONSTRUCTION AREA. TREES ARE NOT TO BE REMOVED WITHOUT PERMISSION OF THE ENGINEER. THE CONTRACTOR IS RESPONSIBLE FOR ANY TREE PRUNING THAT MAY BE NECESSARY AND ALL TREE PRUNING SHALL TAKE PLACE PRIOR TO THE START OF CONSTRUCTION.
11. ALL DISTURBED STREET SURFACES TO BE REGENERATED. REGENERATE ALL CONCRETE OR ASPHALT TO SATISFACTION OF ENGINEER WHILE ALL OTHER AREAS TO BE REGENERATED COMPLETE WITH 100mm OF TOP SOIL.
12. DO NOT ENCROACH ON PRIVATE PROPERTY WITHOUT SECURING PERMISSION OR TEMPORARY EASEMENTS. MAKE GOOD ANY DAMAGE TO PROPERTIES AT CONTRACTOR'S EXPENSE.
13. SURVEYED AREA DOES NOT EXTEND BELOW MEAN WATER LEVEL AT APPROXIMATE ELEVATION 0.0m (CGVD2013). THE PROPOSED WORKS DO NOT EXTEND INTO SUB-TOTAL AREA.





10.0 Key Contact List

Emergency Contacts

Fire Department - 911

Ambulance - 911

Police - 911

Local Hospitals

Cape Breton Regional Hospital - 902-567-7770

Northside General Hospital - 902-794-852

Victoria County Memorial Hospital – 902 – 295 - 2112

NCL - Northern Contracting Ltd.

Sheldon Marinelli - President - 902-565-8321

Josh Swain - Health & Safety Coordinator - 902-549-0402

Sean Mackenzie – Project Manager - 902-565-0084

Ethan Campbell – Site Foreman – 902-574-2621

NCL Office - 902-736-8908

Build Nova Scotia

Donnie Burke – Senior Director – 902-567-2715

Cory MacPhee – Project Manager – 902-574-1022



Fisheries and Oceans
Canada

Pêches et Océans
Canada

PO Box 1006, P500
Dartmouth, NS
B2Y 4A2

June 17, 2025

Our file *Notre référence*
25-HMAR-00318

Nova Scotia Natural Resources and Renewables
Attn: Tara Crandlemere
15 Arlington Place, Suite 7, 2nd Floor
Truro, Nova Scotia
B2N 1Z9

Subject: Dominion Beach Nourishment Pilot Project, Cape Breton Regional Municipality, Nova Scotia. GPS Coordinates: 46.215488°, -60.032613°. Implementation of Measures to Avoid and Mitigate the Potential for Prohibited Effects to Fish and Fish Habitat

Dear Tara Crandlemere:

The Fish and Fish Habitat Protection Program (the Program) of Fisheries and Oceans Canada (DFO) received your proposal on June 3, 2025. We understand that you propose to:

- Place material to help to stabilize part of Dominion Beach. Most work will be conducted above the Ordinary High Water Mark (OHWM), and will include: shallow excavation of sand, relocation, and redistribution of sand from one part of the beach to another, and placement of additional beach nourishment materials.
- In addition, some material will be placed in the intertidal area, just below the OHWM.
- Material that will be placed to reinforce and support the beach structure includes: cobble (50 to 150 mm; round) and clear stone material (c2 and c5 clear stone)
- Machinery used to conduct the work includes excavators. Machinery will be positioned on land above the OHWM.
- The area below OHWM where material will be placed will have a footprint of 136 m².

We understand the following aquatic species listed under the *Species at Risk Act* may use the area in the vicinity of where your proposal is to be located:

- White Shark (*Carcharodon carcharias*) listed as Endangered
- Fin Whale (*Balaenoptera physalus*) listed as Special Concern
- Blue Whale (*Balaenoptera musculus*) listed as Endangered
- Northern Wolffish (*Anarhichas denticulatus*) listed as Threatened

Canada

- Atlantic Wolffish (*Anarhichas lupus*) listed as Special Concern
- North Atlantic Right Whale (*Eubalaena glacialis*) listed as Endangered
- Leatherback Sea Turtle (*Dermochelys coriacea*) listed as Endangered

Our review considered the following information:

- Request for Review submitted by Michael Browne to the Program on June 3, 2025.

Your proposal has been reviewed to determine whether it is likely to result in:

- The death of fish by means other than fishing and the harmful alteration, disruption or destruction of fish habitat which are prohibited under subsections 34.4(1) and 35(1) of the *Fisheries Act*; and
- Effects to listed aquatic species at risk, any part of their critical habitat or the residences of their individuals in a manner which is prohibited under sections 32, 33 and subsection 58(1) of the *Species at Risk Act*. ; and
- The introduction of aquatic species into regions or bodies of water frequented by fish where they are not indigenous, which is prohibited under section 10 of the *Aquatic Invasive Species Regulations*.

The aforementioned outcomes are prohibited unless authorized under their respective legislation and regulations.

To avoid and mitigate the potential for prohibited effects to fish and fish habitat (as listed above), we recommend implementing the measures listed below:

- Notify this office (DFO.FPPMAR-PPPMAR.MPO@dfo-mpo.gc.ca) at least 10 days before starting your project. Please include the file number referenced above in your correspondence.
- Ensure that a copy of this letter be kept on site while the work is in progress.

Riparian zone management

- Limit vegetation removal, pruning and grubbing to the area required for accessing the project site.
- Limit access to shorelines and banks or areas adjacent to the watercourse or water body.

Fish habitat structure and cover

- Limit disturbance of fish habitat features (e.g., aquatic plants, rocks, woody material) to the area required to carry out the project.
- Operate machinery on land or from barges during all phases of the project.
- Limit operation of vehicles and machinery to the area required to carry out the project.
- Avoid any temporary or permanent increase in existing footprint below the ordinary high water mark, other than what has been reviewed by FFHPP.

Sediment management

- Develop and implement an erosion and sediment control plan for all phases of the project.
- Regularly observe the watercourse or water body for signs of suspended sediment during all phases of the project and take corrective action when and where required.
- Use only clean materials.

Deleterious substances management

- Develop a plan to prevent deleterious substances from entering a watercourse or water body.
- Maintain all machinery on site in a clean condition and free of fluid leaks.
- Wash, refuel and service machinery in such a way as to prevent any deleterious substances from entering a watercourse or water body.
- Store fuel and other materials for the machinery in such a way as to prevent any deleterious substances from entering a watercourse or water body.
- Plan activities near water such that materials (e.g., paint, primers, blasting abrasives, rust solvents, degreasers, grout, poured concrete or other chemicals) do not enter a watercourse or water body.
- Ensure that building material used in a watercourse or water body has been handled and treated in a manner that prevents the release or leaching of deleterious substances into a watercourse or water body.
- Dispose of all waste materials on land in a designated area away from the ordinary high water mark of any watercourse or water body.
- Implement a response plan immediately in the event of a spill of a deleterious substance (including sediment).
 - Stop all works, undertakings and activities.
 - Report spill immediately when a deleterious substance enters a watercourse or water body.
 - Contain water with deleterious substances.
 - Clean-up and dispose of water contaminated with deleterious substances.
 - Use an emergency spill kit.
- All spills or leaks must be promptly contained, cleaned up, and reported to the 24-hour Environmental Emergencies Report System (1-800-565-1633).

Aquatic Invasive Species (AIS)

AIS are fish, invertebrate or plant species that have been introduced into an aquatic environment outside of their natural range and can result in harm to the indigenous species and subject to the *Aquatic Invasive Species Regulations*. The Program cannot confirm what, if any, AIS may exist currently at your project site at this time, however, it is important to ensure that you are taking any necessary measures to prevent the spread of AIS.

- Be aware of the different types of AIS. An AIS identification booklet can be found at this link: <https://waves-vagues.dfo-mpo.gc.ca/Library/40961242.pdf>

- Report any sightings of AIS as soon as possible to DFO by phone Toll-free: 1-888-435-4040 or by email at: DFO.MARAquaticInvasiveSpecies-EspeciesAquatiquesEnvahissante.MPO@dfo-mpo.gc.ca
- Ensure all watercraft and equipment arrives on site in a clean condition (i.e., no presence of slime coating, plants or animals, sediment on exterior and internal compartments of watercraft and equipment).
- Inspect all watercraft and equipment for any attached or hitchhiking aquatic plants or animals prior to waterbody entry and exit. If you find any plants or animals, remove them, place in sealed container, and dispose of them properly far away from any waterbody.
- Clean, drain, dry, and decontaminate all watercraft and equipment with high-pressure, hot-water spray (i.e., 68 °C at 1600 psi for 15 seconds) before storing or moving to a different waterbody. Cleaning and draining should be completed on land, away from any waterbody. Watercraft and equipment should be completely clean and dry before entry into a different waterbody.
- Small pieces of equipment can be cleaned and decontaminated by being submerged in:
 - hot water (60 °C for 5 min.);
 - sodium hypochlorite (0.25% concentration for 20 min.);
 - Virkom (4% for 90 min.); or
 - quaternary ammonium compounds (0.4% for 10 min.).
- Maintain a logbook of past and present use and cleaning of watercraft and equipment (e.g., date/time, location, AIS observations, comments).
- Inspect all materials and structures to be placed in a waterbody and ensure there are no attached or hitchhiking aquatic plants or animals prior to placement.
- Avoid sourcing materials or structures to be placed in a waterbody from areas where AIS are known to be present.
- Additional information on AIS can be found at this following link:
<http://www.dfo-mpo.gc.ca/species-especies/ais-eae/about-sur/index-eng.html>

Provided that you incorporate these measures into your plans, the Program is of the view that your proposal is not likely to result in the contravention of the above mentioned prohibitions and requirements.

Should your plans change or if you have omitted some information in your proposal, further review by the Program may be required. Consult our website (<http://www.dfo-mpo.gc.ca/pnw-ppe/index-eng.html>) or consult with a qualified environmental consultant to determine if further review may be necessary. It remains your responsibility to remain in compliance with the *Fisheries Act*, the *Species at Risk Act* and the *Aquatic Invasive Species Regulations*.

It is also your *Duty to Notify* DFO if you have caused, or are about to cause, the death of fish by means other than fishing and/or the harmful alteration, disruption or destruction of fish habitat. Such notifications should be directed to (<http://www.dfo-mpo.gc.ca/pnw-ppe/contact-eng.html>).

It remains your responsibility to meet all other federal, territorial, provincial and municipal requirements that apply to your proposal.

Please note that the advice provided in this letter will remain valid for a period of 2 years from the date of issuance. If you plan to execute your proposal after the expiry of this letter, we recommend that you contact the Program to ensure that the advice remains up-to-date and accurate. Furthermore, the validity of the advice is also subject to there being no change in the relevant aquatic environment, including any legal protection orders or designations, during the 2 year period.

If you have any questions with the content of this letter, please contact Olga Trela at our Dartmouth office at 782-641-5708 or by email at Olga.Trela@dfo-mpo.gc.ca. Please refer to the file number referenced above when corresponding with the Program.

Yours sincerely,

Olga Trela
Biologist
Fish and Fish Habitat Protection Program
Ecosystems Management

Appendix A: Figures/Photos

cc:
DFO Conservation and Protection – MAR Region
Michael Browne - CBCL Limited

Appendix A: Figures/Photos

Approximate Coordinates: 46.215488°, -60.032613°



Figure 1. Aerial imagery of Dominion Beach Nourishment Pilot project area (Ref: Proponent.)



Figure 2. Photo 49: Start of Transect 7, facing south (Ref: Proponent).

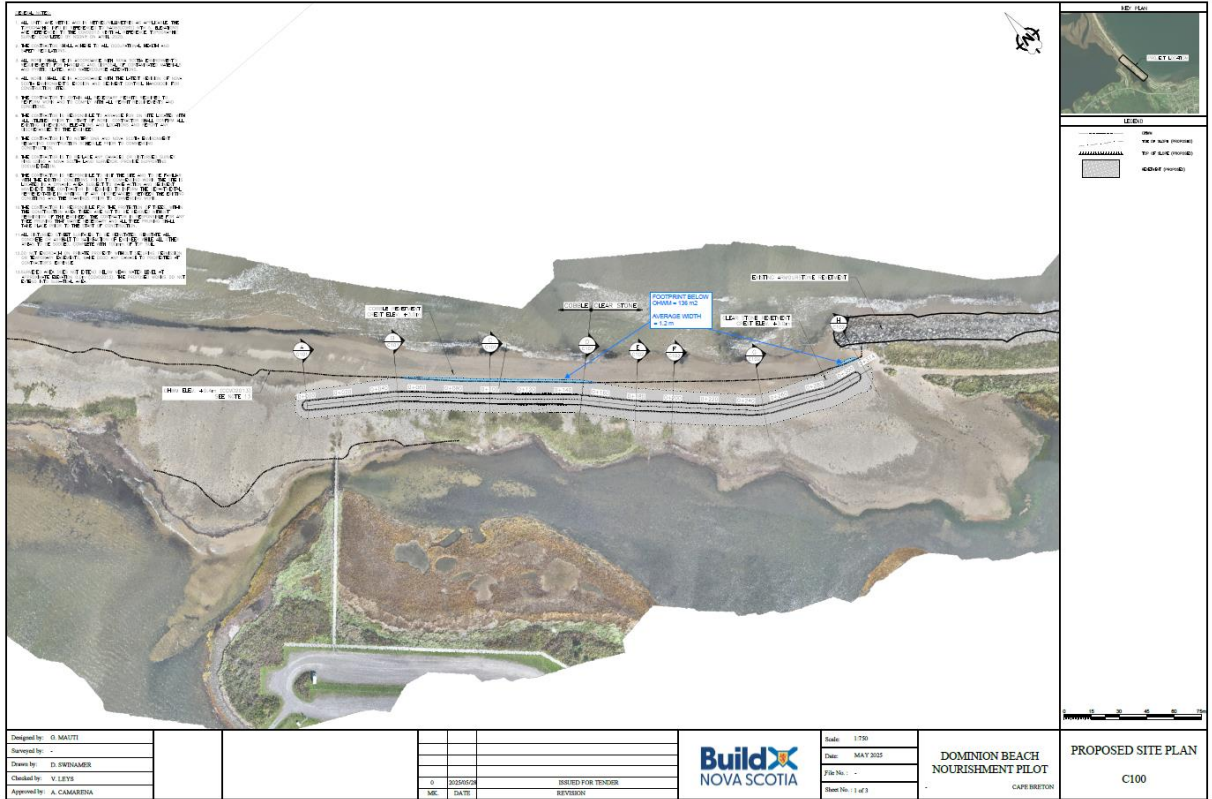


Figure 3. Proposed site plan (Ref: Proponent).